



## Clover

- K29 Quadruple-Layered Action Backing for greater seam strength and permeability.
- Features a natural and lush colorway for a perfect lawn year-round.
- Backed by our industry-leading 15-year warranty.

### GENERAL FEATURES:

<b>Traffic Level:</b>	Moderate to Heavy Traffic
<b>Applications:</b>	Landscape
<b>Blade Colors:</b>	Field Green / Apple Green

### PRODUCT SPECIFICATIONS

#### Yarn Characteristics

**Type:** Monofilament PE with Thatch

**Composition/Structure:** Polyethylene

**Denier:** 8,000/5,000

**Colors:** Field Green/Apple Green

**Blade Shape:** 3D Curvy W

#### Turf Characteristics

**Total Product Weight:** Approx. 99 Ounces Per Square Yard

**Pile/Face Weight:** Approx. 72 Ounces

**Pile Height:** Approx. 1.625 Inches

**Machine Gauge:** 3/8 inch

**Thatch Color:** Green & Tan

#### Backing Characteristics

**Primary Composition:** K29 Quadruple-Layered Action Backing

**Weight:** 7.3 Ounces Per Square Yard      **Tuft Bind:** 10+ Pounds

**Finish Coating:** Polyurethane 20 Ounces Per Square Yard\*

#### Manufactured Rolls

**Width:** 15 Feet      **Length:** 100 Feet

**Shipping Weight:** 1001 Pounds\*

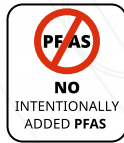
**Roll Diameter:** 24 Inches

#### Particulate Infill

**Type:** Quality Infill

**Weight:** 1.5-2.5 Lbs Per Sq Ft\*

**Colors:** Green, Black, or Natural



#### Main Advantages:

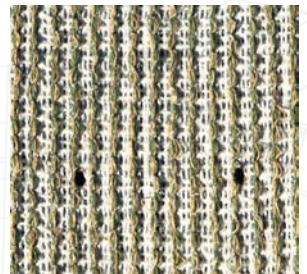
- Designed to truly replicate grass with enhanced recovery
- Heat and frost resistant/ UV stabilized
- No harmful environmental effects, Not water soluble
- Uniquely formulated backing for greater seam strength

#### Recommended Maintenance:

Rinse and groom as needed to limit matting

**Drainage Rate:** 400+ inches of rain per hour per square yard

\* Approximate Weight



Artificial grass is made from plastic and should not be subject/exposed to open flames or high heat producing items.