



**TigerTurf™**

## Diamond Pro Spring

- Built with TigerCool™ Technology which reduces turf temperatures up to 15%.
- IPEMA Certified reducing G-Max shock, perfect for playgrounds.
- K29 Quadruple-Layered Action Backing for greater seam strength and permeability.

### GENERAL FEATURES:

|                       |                            |
|-----------------------|----------------------------|
| <b>Traffic Level:</b> | Moderate to Heavy Traffic  |
| <b>Applications:</b>  | Landscape                  |
| <b>Blade Colors:</b>  | Field Green / Clover Green |

### PRODUCT SPECIFICATIONS

#### Yarn Characteristics

**Type:** Monofilament PE with Thatch

**Composition/Structure:** Polyethylene

**Denier:** 10,800/5,000

**Colors:** Field Green/ Clover Green

**Blade Shape:** 3D Curvy W

#### Turf Characteristics

**Total Product Weight:** Approx. 104 Ounces Per Square Yard

**Pile/Face Weight:** Approx. 75 Ounces

**Pile Height:** Approx. 1.875 Inches

**Machine Gauge:** 3/8 inch

**Thatch Color:** Green & Tan

#### Backing Characteristics

**Primary Composition:** K29 Quadruple-Layered Action Backing

**Weight:** 9 Ounces Per Square Yard

**Tuft Bind:** 10+ Pounds

**Finish Coating:** Polyurethane 20 Ounces Per Square Yard\*

#### Manufactured Rolls

**Width:** 15 Feet

**Length:** 100 Feet

**Shipping Weight:** 1,065 Pounds\*

**Roll Diameter:** 24 Inches

#### Particulate Infill

**Type:** Quality Infill

**Weight:** 1.5-2.5 Lbs Per Sq Ft\*\*

**Colors:** Green, Black, or Natural



#### Main Advantages:

- Designed to truly replicate grass with enhanced recovery
- Heat and frost resistant/ UV stabilized
- No harmful environmental effects, Not water soluble
- Uniquely formulated backing for greater seam strength

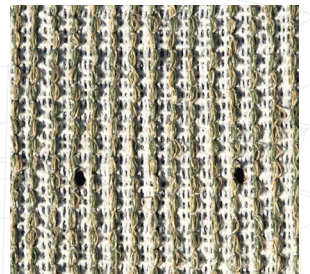
#### Recommended Maintenance:

Rinse and groom as needed to limit matting

**Drainage Rate:** 400+ inches of rain per hour per square yard

\* Approximate Weight

† For IPEMA Certification, infill must be 2 pounds of Envirofill per sq ft



Artificial grass is made from plastic and should not be subject/exposed to open flames or high heat producing items.

REV112425