



Lush

- Features a natural and lush colorway for a perfect lawn year-round.
- K29 Quadruple-Layered Non-Expansive Backing for greater seam strength.
- Backed by our industry-leading 15-year warranty.

GENERAL FEATURES:

Traffic Level:	Moderate Traffic
Applications:	Landscape
Blade Colors:	Field Green

PRODUCT SPECIFICATIONS

Yarn Characteristics

Type: Monofilament PE with Thatch
Composition/Structure: Polyethylene/Polypropylene
Denier: 14,000/4,400
Colors: Field Green Blend
Blade Shape: Ribbed, Tapered Oval, Flared 3D W

Turf Characteristics

Total Product Weight: Approx 112 Ounces Per Square Yard
Pile/Face Weight: Approx. 85 Ounces
Pile Height: Approx. 2 Inches
Machine Gauge: 3/8 inch
Thatch Color: Green & Tan

Backing Characteristics

Primary Composition: K29 Quadruple-Layered Action Backing	
Weight: 7.3 Ounces Per Square Yard	Tuft Bind: 10+ Pounds
Finish Coating: Polyurethane 20 Ounces Per Square Yard*	

Manufactured Rolls

Width: 15 Feet	Length: 100 Feet
Shipping Weight: 1200 Pounds*	
Roll Diameter: 24 Inches	

Particulate Infill

Type: Quality Infill
Weight: 1.5-2.5 Lbs Per Sq Ft*
Colors: Green, Black, or Natural



Main Advantages:

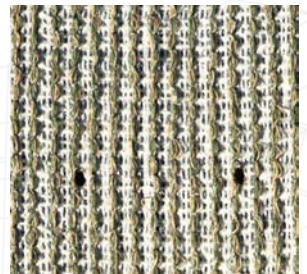
- Designed to truly replicate grass with enhanced recovery
- Heat and frost resistant/ UV stabilized
- No harmful environmental effects, Not water soluble
- Uniquely formulated backing for greater seam strength

Recommended Maintenance:

Rinse and groom as needed to limit matting

Drainage Rate: 400+ inches of rain per hour per square yard

* Approximate Weight



Artificial grass is made from plastic and should not be subject/exposed to open flames or high heat producing items.