



## Pet Turf

- Built with TigerCool™ Technology which reduces turf temperatures up to 15%.
- IPEMA Certified reducing G-Max shock, perfect for playgrounds.
- K29 Quadruple-Layered Action Backing for greater seam strength and permeability.

### GENERAL FEATURES:

<b>Traffic Level:</b>	Moderate to Heavy Traffic
<b>Applications:</b>	Landscape
<b>Blade Colors:</b>	Field Green / Clover Green

### PRODUCT SPECIFICATIONS

#### Yarn Characteristics

<b>Type:</b> Monofilament PE with Thatch
<b>Composition/Structure:</b> Polyethylene
<b>Denier:</b> 10,800/5,000
<b>Colors:</b> Field Green/Mid-Olive Green
<b>Blade Shape:</b> 3D Curvy W & 3D Curvy N

#### Turf Characteristics

<b>Total Product Weight:</b> Approx. 89 Ounces Per Square Yard
<b>Pile/Face Weight:</b> Approx. 60 Ounces
<b>Pile Height:</b> Approx. 1.00 Inches
<b>Machine Gauge:</b> 3/8 inch
<b>Thatch Color:</b> Green & Tan

#### Backing Characteristics

<b>Primary Composition:</b> K29 Quadruple-Layered Action Backing	
<b>Weight:</b> 9 Ounces Per Square Yard	<b>Tuft Bind:</b> 10+ Pounds
<b>Finish Coating:</b> Polyurethane 20 Ounces Per Square Yard*	

#### Manufactured Rolls

<b>Width:</b> 15 Feet	<b>Length:</b> 100 Feet
<b>Shipping Weight:</b> 928 Pounds*	
<b>Roll Diameter:</b> 24 Inches	

#### Particulate Infill

<b>Type:</b> Quality Infill
<b>Weight:</b> 1.5-2.5 Lbs Per Sq Ft**
<b>Colors:</b> Green, Black, or Natural



#### Main Advantages:

- Designed to truly replicate grass with enhanced recovery
- Heat and frost resistant/ UV stabilized
- No harmful environmental effects, Not water soluble
- Uniquely formulated backing for greater seam strength

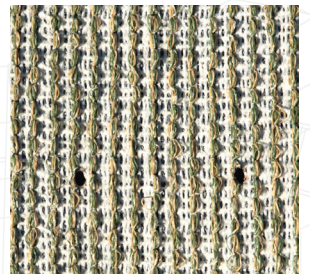
#### Recommended Maintenance:

Rinse and groom as needed to limit matting

**Drainage Rate:** 400+ inches of rain per hour per square yard

\* Approximate Weight

† For IPEMA Certification, infill must be 2 pounds of Envirofill per sq ft



Artificial grass is made from plastic and should not be subject/exposed to open flames or high heat producing items.