



**TigerTurf™**

## Playground Fescue

- Built with TigerCool™ Technology which reduces turf temperatures up to 15%.
- IPEMA Certified reducing G-Max shock, perfect for playgrounds.
- K29 Quadruple-Layered Action Backing for greater seam strength and permeability.

### GENERAL FEATURES:

<b>Traffic Level:</b>	Moderate to Heavy Traffic
<b>Applications:</b>	Landscape
<b>Blade Colors:</b>	Field Green / Mid-Olive Green

### PRODUCT SPECIFICATIONS

#### Yarn Characteristics

**Type:** Monofilament PE with Thatch

**Composition/Structure:** Polyethylene

**Denier:** 10,800/5,000

**Colors:** Field Green/Mid-Olive Green

**Blade Shape:** 3D Curvy W & 3D Curvy N

#### Turf Characteristics

**Total Product Weight:** Approx. 84 Ounces Per Square Yard

**Pile/Face Weight:** Approx. 55 Ounces

**Pile Height:** Approx. 1.375 Inches

**Machine Gauge:** 3/8 Inch

**Thatch Color:** Green & Tan

#### Backing Characteristics

**Primary Composition:** K29 Quadruple-Layered Action Backing

**Weight:** 9 Ounces Per Square Yard      **Tuft Bind:** 10+ Pounds

**Finish Coating:** Polyurethane 20 Ounces Per Square Yard\*

#### Manufactured Rolls

**Width:** 15 Feet      **Length:** 100 Feet

**Shipping Weight:** 876 Pounds\*

**Roll Diameter:** 24 Inches

#### Particulate Infill

**Type:** Quality Infill

**Weight:** 1.5-2.5 Lbs Per Sq Ft\*\*

**Colors:** Green, Black, or Natural



#### Main Advantages:

- Designed to truly replicate grass with enhanced recovery
- Heat and frost resistant - UV stabilized
- No harmful environmental effects, not water soluble
- Uniquely formulated backing for greater seam strength

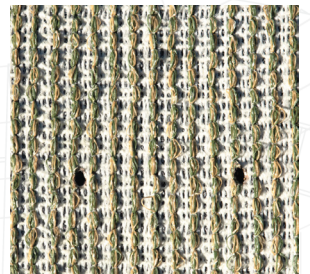
#### Recommended Maintenance:

Rinse and groom as needed to limit matting

**Drainage Rate:** 400+ inches of rain per hour per square yard

\* Approximate Weight

† For IPEMA Certification, infill must be 2 pounds of Envirofill per sq ft



Artificial grass is made from plastic and should not be subject/exposed to open flames or high heat producing items.